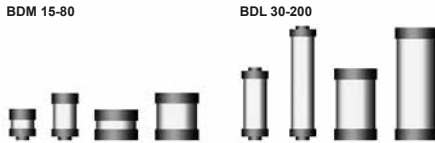


Breather Dryers BDL, BDM



1. TECHNICAL SPECIFICATIONS

1.1 FILTER HOUSING

Construction

The inline version BDL and the breather dryer BDM consist of a filter cartridge only, which is non-replaceable.

1.2 GENERAL

The breather dryer cartridges are filled with silica gel (orange) which, once completely saturated, cannot be regenerated.

A durable contamination filter above and below the silica gel prevents contamination from penetrating inside the cartridge (particle filtration > 2 µm nominal).

This ensures optimum humidity absorption.

To guarantee the performance of the protective filter layers, the entire cartridge must be replaced.

When the filter is due to be changed, the colour changes from orange to green.

1.3 FILTER SPECIFICATIONS

Temperature range	-32 °C to +100 °C
Material of filter cartridge	Plastic with silica gel filling (orange)

1.4 SEALS

NBR (= Perbunan)

1.5 SPECIAL MODELS AND ACCESSORIES

on request

1.6 SPARE PARTS

See Original Spare Parts List

1.7 CERTIFICATES AND APPROVALS

on request

1.8 COMPATIBILITY WITH HYDRAULIC FLUIDS ISO 2943

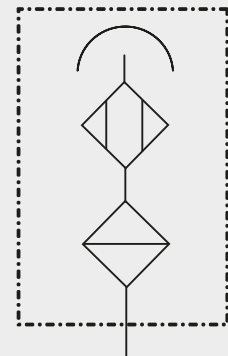
The filter cartridge actively prevents contamination particles and humidity from entering the tank. Compatible with mineral oils, bio oils and diesel fuel.

1.9 CHANGING INTERVALS

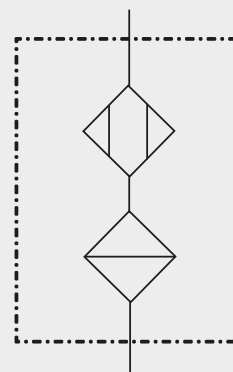
When the filter is due to be changed, the colour changes reliably from gold/orange to green.

Symbol

BDM



BDL



2. MODEL CODE (also order example)

BDL 200 N 2 W 1 . X

2.1 COMPLETE FILTER

Filter type _____

BDL Inline version
BDM Mini version

Size of filter _____

BDL: 30, 50, 60, 200
BDM: 15, 30, 50, 80

Type and size of connection _____

N NPT thread connection (1/2" female)

Filtration rating in µm _____

2 2 µm

Type of clogging indicator _____

W without port, no clogging indicator

Type code _____

1

Modification number _____

X the latest version is always supplied

3. FILTER CALCULATION / SIZING

3.1 SIZING GUIDELINES

The rate at which contamination enters a hydraulic system can be considerably reduced by using efficient tank breather filtration.

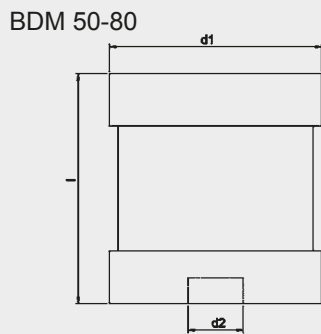
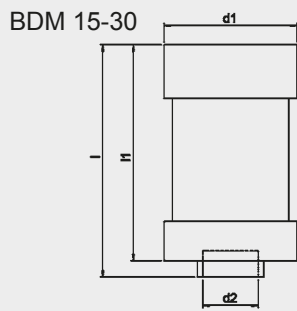
CAUTION:

Incorrectly sized tank breather filters can place additional strain on the system and reduce the service life of hydraulic filter elements.

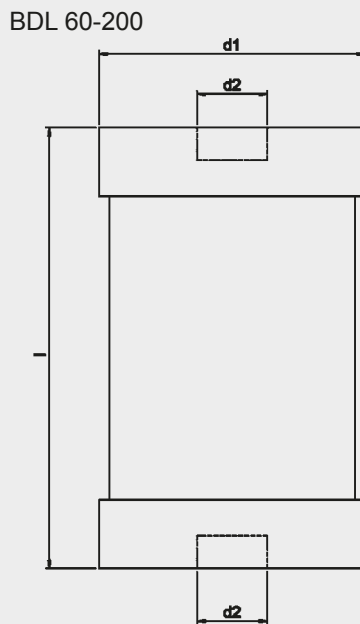
3.2 WATER RETENTION CAPACITY

Type	H2O
BDL 30	0.03 l
BDL 50	0.05 l
BDL 60	0.06 l
BDL 200	0.19 l
BDM 15	0.01 l
BDM 30	0.03 l
BDM 50	0.05 l
BDM 80	0.08 l

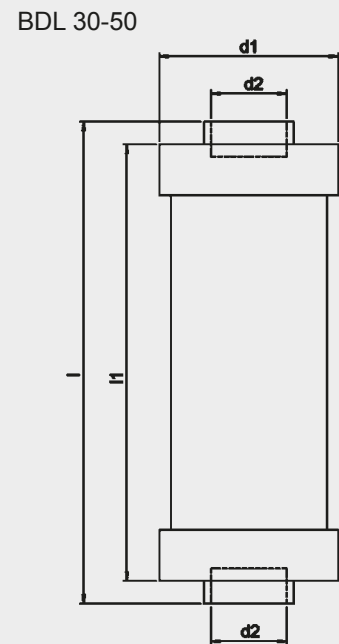
4. DIMENSIONS



Type	BDM 15	BDM 30	BDM 50	BDM 80
d1	51	51	83	83
d2	NPT 1/2"	NPT 1/2"	NPT 1/2"	NPT 1/2"
l	59	89	57	90
l1	52	82	-	-
Weight [kg]	0.17	0.22	0.35	0.47



Type	BDL 60	BDL 200
d1	82	82
d2	NPT 1/2"	NPT 1/2"
l	135	212
Weight [kg]	0.48	0.80



Type	BDL 30	BDL 50
d1	51	51
d2	NPT 1/2"	NPT 1/2"
l	137	216
l1	124	203
Weight [kg]	0.10	0.21

